

Treatment Experienced (with Sofosbuvir and Ribavirin)

Retreatment of Sofosbuvir + Ribavirin Failure with Sofosbuvir-Containing Regimens in Patients with Genotype 2 or 3

Esteban R, et al. 49th EASL; April 2014. Abstract 08.

Retreatment of SOF + RBV Failure with SOF-Containing Regimens in GT 2 or 3

Study Features

Retreatment of Sofosbuvir + Ribavirin Failure: Features

- **Design:** Open-label, study for patients with GT 2 or 3 who had failure with sofosbuvir + ribavirin in FISSION, POSITRON, or FUSION trial
- **Setting:** Europe, United States, and Canada
- **Entry Criteria**
 - N = 107 patients with chronic HCV
 - HCV genotype 2 (10%) or HCV genotype 3 (90%)
 - Previous relapse on sofosbuvir plus ribavirin
 - Patients with compensated cirrhosis allowed to enroll
- **Regimens (patients offered 2 possible regimens)**
 - Sofosbuvir + Ribavirin x 24 weeks
 - Sofosbuvir + Peginterferon + Ribavirin x 12 weeks
- **Primary End-Point:** SVR12

Retreatment of SOF + RBV Failure with SOF-Containing Regimens in GT 2 or 3 Baseline Characteristics

Baseline Characteristic	SOF + PEG + RBV x 12 weeks (n = 34)	SOF + RBV x 24 weeks (n = 73)
Age, mean (range)	53 (31-70)	53 (38-63)
Male, n (%)	26 (77%)	63 (86%)
White, n (%)	1 (1%)	0
Mean BMI kg/m ² (range)	29 (22-39)	28 (20-41)
Cirrhosis, %	14 (41%)	25 (34%)
IL28B CC, n (%)	11 (32%)	27 (37%)
Genotype, n (%)		
2	6 (18%)	5 (7%)
3	28 (82%)	68 (93%)
Mean baseline HCV RNA, log ₁₀ IU/ml (range)	6.3 (4.8-7.8)	6.6 (4.4-7.6)

Retreatment of SOF + RBV Failure with SOF-Containing Regimens in GT 2 or 3 Study Design

Week 0 12 24 36

**GT2
or
GT3**

N = 34

**Sofosbuvir +
PEG + RBV**

SVR12

N = 73

Sofosbuvir + RBV

SVR12

Drug Dosing

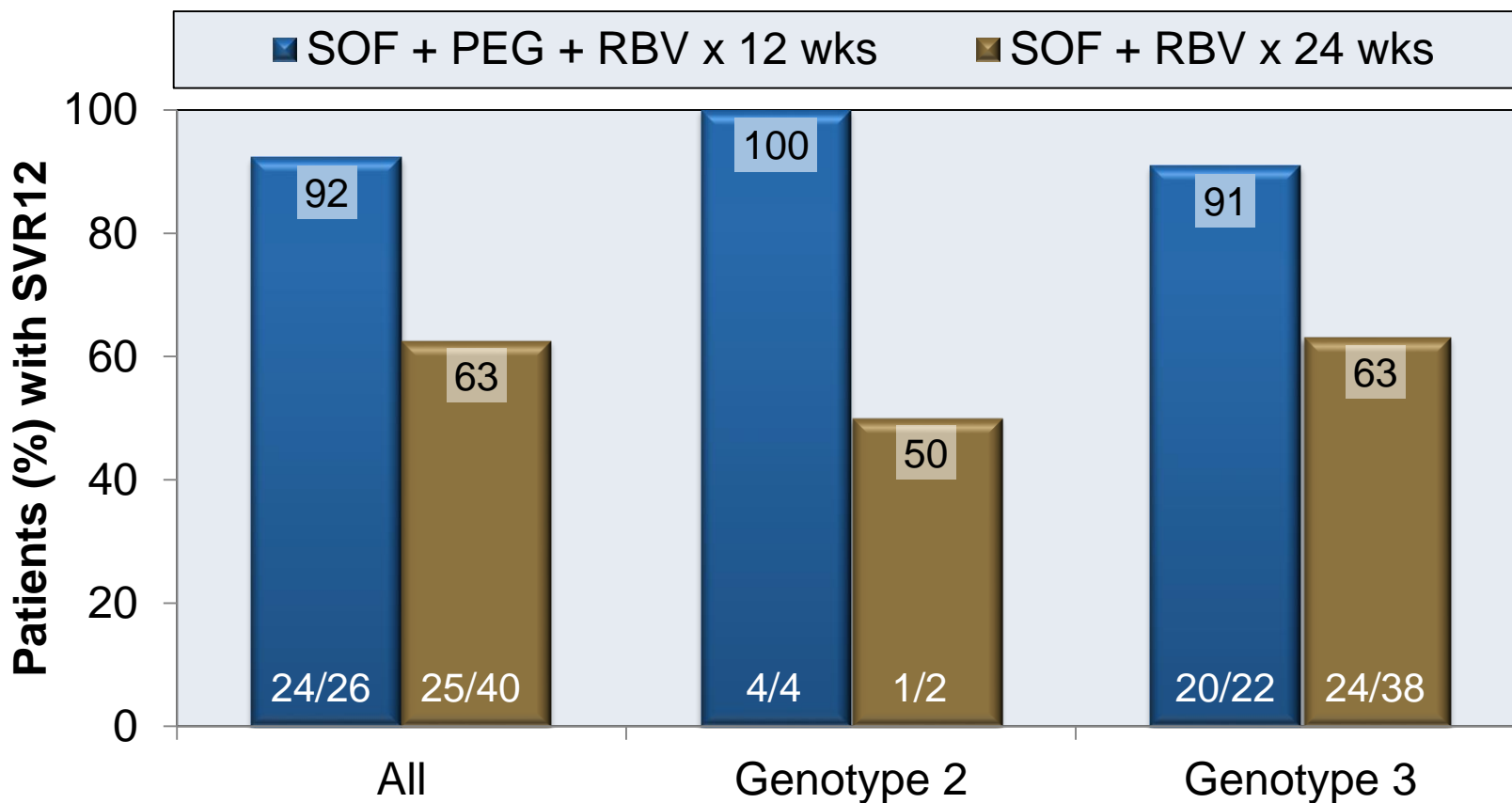
Sofosbuvir: 400 mg once daily

Peginterferon alfa-2a: 180 µg once weekly

Weight-based Ribavirin (in 2 divided doses): 1000 mg/day if < 75 kg or 1200 mg/day if ≥ 75 kg

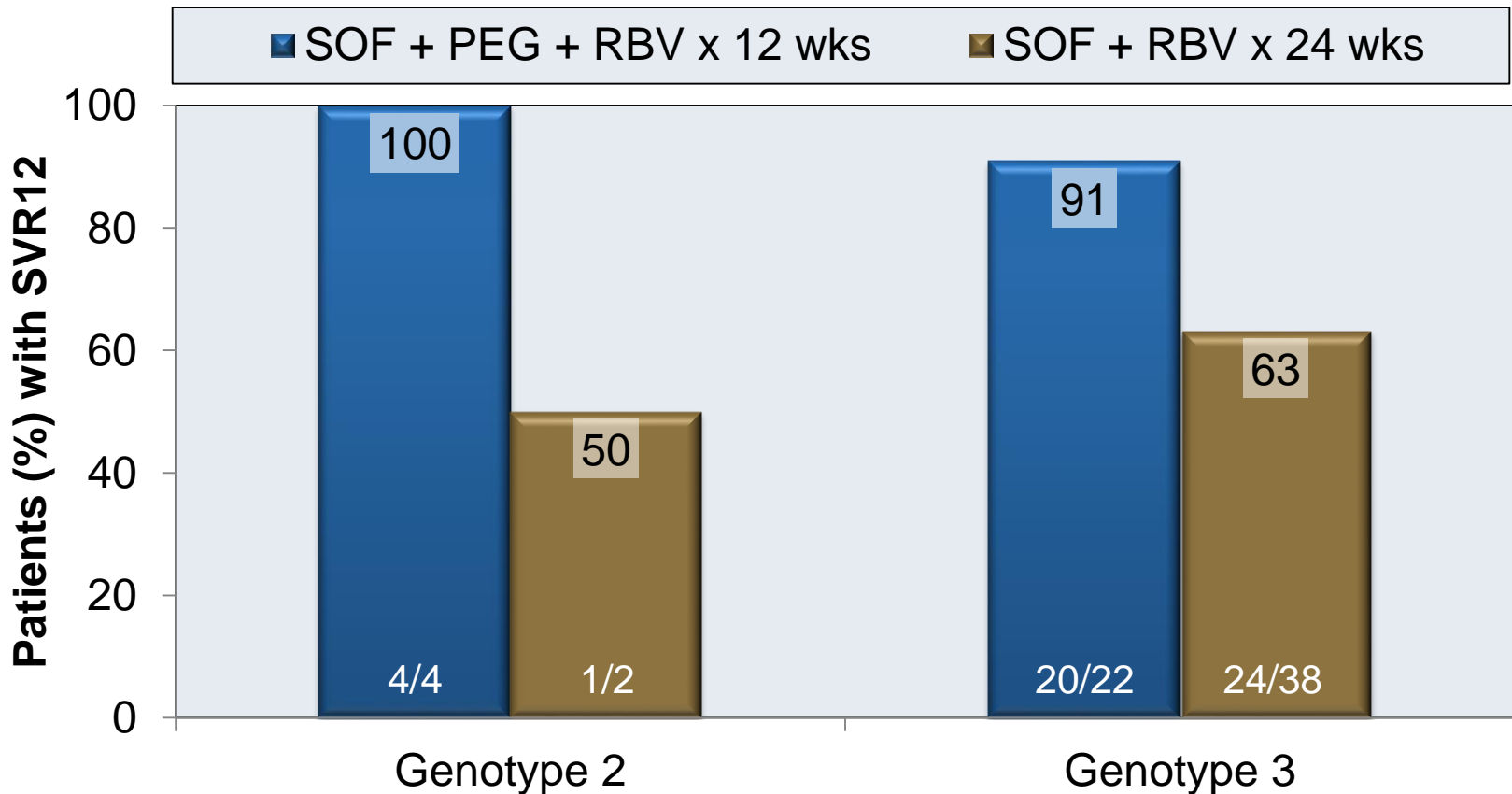
Retreatment of SOF + RBV Failure with SOF-Containing Regimens in GT 2 or 3 Results, by Genotype

SVR12 by Regimen and HCV Genotype



Retreatment of SOF + RBV Failure with SOF-Containing Regimens in GT 2 or 3 Results, by Genotype

SVR12 by Regimen and HCV Genotype



This slide deck is from the University of Washington's *Hepatitis C Online* and *Hepatitis Web Study* projects.

Hepatitis C Online

www.hepatitisc.uw.edu

Hepatitis Web Study

<http://depts.washington.edu/hepstudy/>

Funded by a grant from the Centers for Disease Control and Prevention.