

Treatment Naïve, Chronic HCV

Interferon alfa-2b +/- Ribavirin for 24 or 48 weeks

McHutchison JG, et al. N Engl J Med. 1998;339:1485-92.

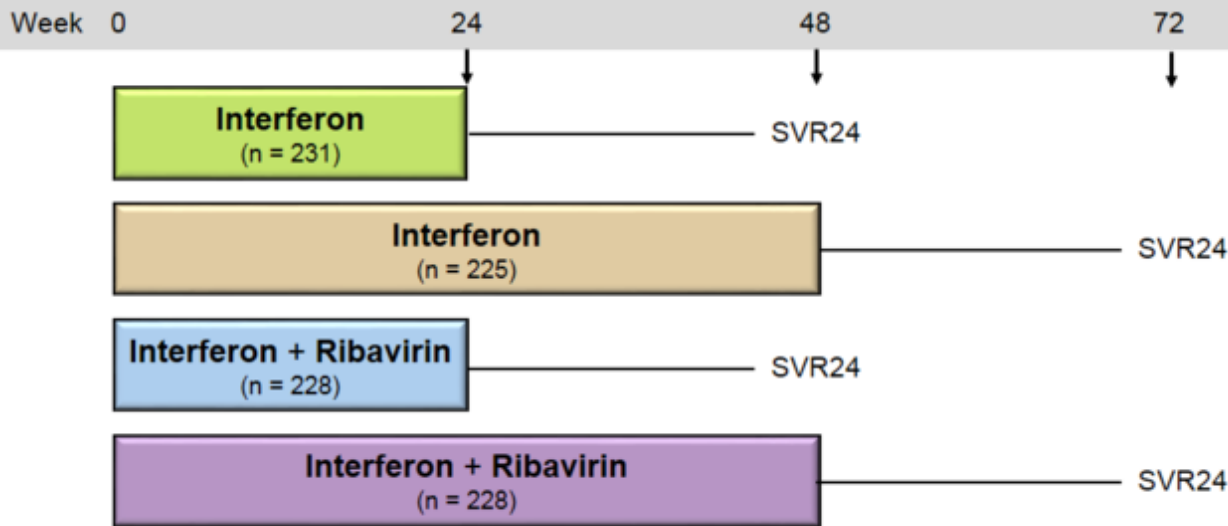
# Interferon alfa-2b +/- Ribavirin for Chronic HCV Study Outline

- **Study**
  - Randomized, double-blinded, placebo controlled, phase 3 trial
  - Conducted in 44 centers in United States
- **Subjects**
  - N = 912 with chronic hepatitis C
  - Treatment naïve; 72% genotype 1
- **Regimens**
  - Interferon alfa-2b + Placebo x 24 or 48 weeks
  - Interferon alfa-2b + Ribavirin (weight based) x 24 or 48 weeks
- **Primary Endpoint**
  - Undetectable serum HCV RNA 24 weeks after stopping treatment

---

\*Ribavirin weight based dosing: <75 kg = 1000 mg/day; ≥75 kg = 1200 mg/day

# Interferon alfa-2b +/- Ribavirin for Chronic HCV Study Design



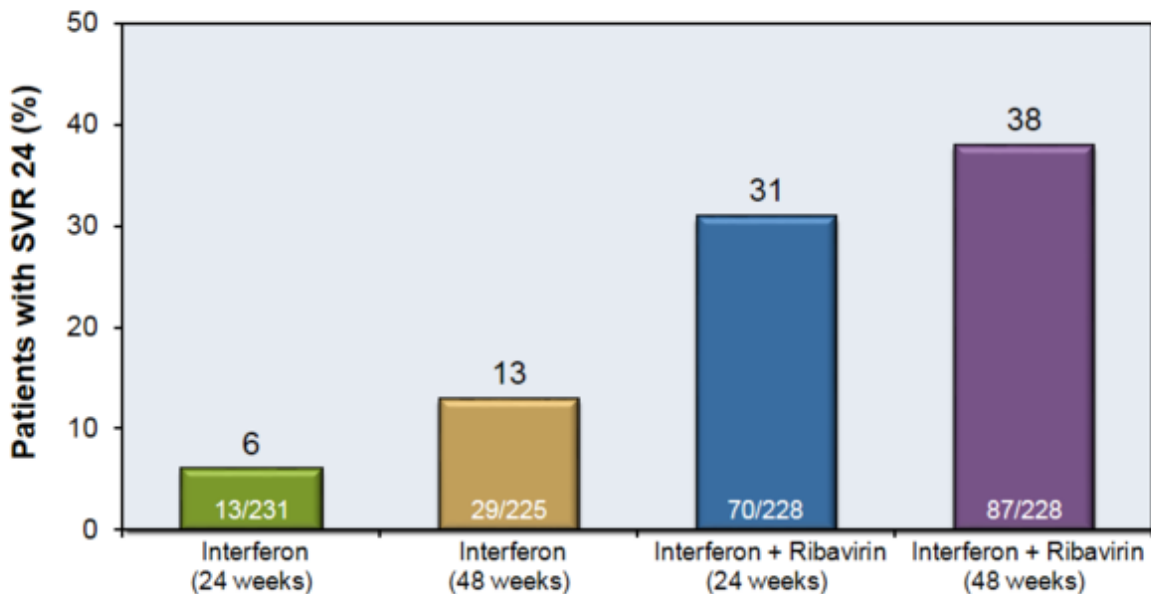
## Drug Dosing

Interferon alfa-2b 3 million U 3x/week

Weight-based Ribavirin (divided bid): 1000 mg/day if < 75kg or 1200 mg/day if ≥ 75kg

# Interferon alfa-2b +/- Ribavirin for Chronic HCV Study Results

## SVR 24, by Treatment Regimen



## Interferon alfa-2b +/- Ribavirin for Chronic HCV Study Conclusions

**Conclusions:** “In patients with chronic hepatitis C, initial therapy with interferon and ribavirin was more effective than treatment with interferon alone.”

This slide deck is from the University of Washington's *Hepatitis C Online* and *Hepatitis Web Study* projects.

Hepatitis C Online

[www.hepatitisc.uw.edu](http://www.hepatitisc.uw.edu)

Hepatitis Web Study

<http://depts.washington.edu/hepstudy/>

Funded by a grant from the Centers for Disease Control and Prevention.