

Treatment Naïve, Chronic HCV

WINR Study

Flat versus Weight-Based Ribavirin Dosing

Jacobson IM, et. al. Hepatology. 2007;46:971-81.

Peginterferon alfa-2b & Weight-based or Flat-dose Ribavirin WIN-R Study: Conclusions

Conclusion: “Peginterferon alfa-2b plus weight-based ribavirin is more effective than flat-dose ribavirin, particularly in genotype 1 patients, providing equivalent efficacy across all weight groups. Ribavirin 1400 mg/day is appropriate for patients 105 to 125 kg. For genotype 2/3 patients, 24 weeks of treatment with flat-dose ribavirin is adequate; no evidence of additional benefit of extending treatment to 48 weeks was demonstrated.”

This slide deck is from the University of Washington's *Hepatitis C Online* and *Hepatitis Web Study* projects.

Hepatitis C Online
www.hepatitisc.uw.edu

Hepatitis Web Study
<http://depts.washington.edu/hepstudy/>

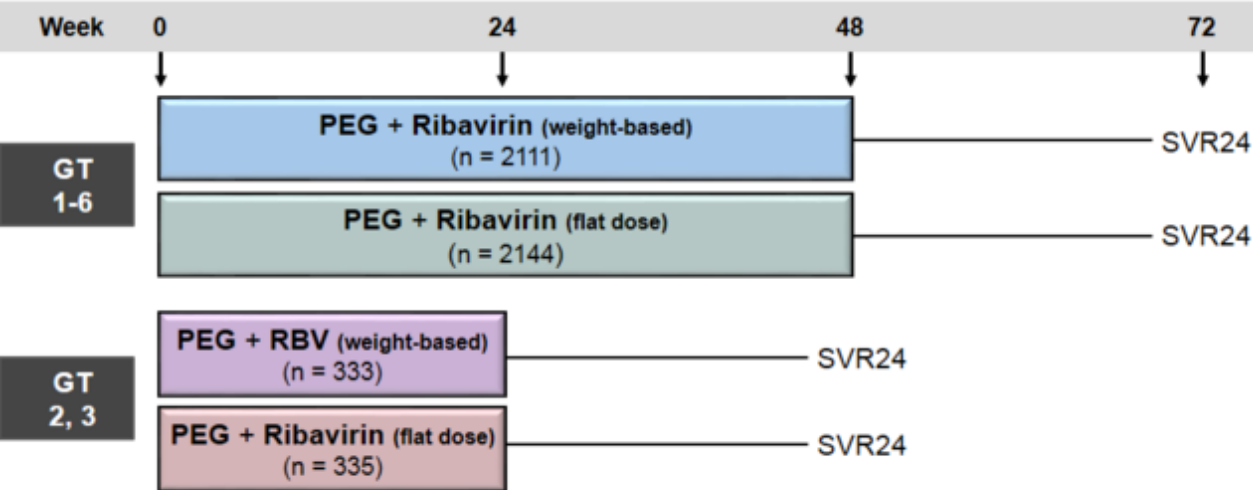
Funded by a grant from the Centers for Disease Control and Prevention.

Peginterferon alfa-2b + Ribavirin (weight-based or flat-dose) WIN-R Study: Design

- **Study**
 - Prospective, randomized, open-label trial
- **Subjects**
 - N = 5027 with chronic hepatitis C (4913 analyzed)
 - Treatment naïve adult patients (Age 18-70)
- **Treatment Regimens**
 - Peginterferon alfa-2b: 1.5 µg/kg/wk + Wt-based* Ribavirin: 800-1400 mg/d
 - Peginterferon alfa-2b: 1.5 µg/kg/wk + Flat-dose Ribavirin: 800 mg/d
- **Treatment Duration**
 - Genotypes 1,4,5,6: duration of 48 weeks
 - Genotypes 2,3: duration of 24 or 48 weeks
- **Primary Endpoint**
 - Undetectable serum HCV RNA at end of treatment (ETR)
 - Undetectable serum HCV RNA 24 weeks after cessation of treatment (SVR)

*Weight-based ribavirin dosing: < 65 kg: 800 mg/d; 65-85 kg: 1000 mg/d; >85-105 kg: 1200 mg/d; >105 kg: 1400 mg/d

Peginterferon alfa-2b + Ribavirin (weight-based or flat-dose) WIN-R Study: Design



Drug Dosing

Peginterferon alfa-2b: 180 µg once weekly

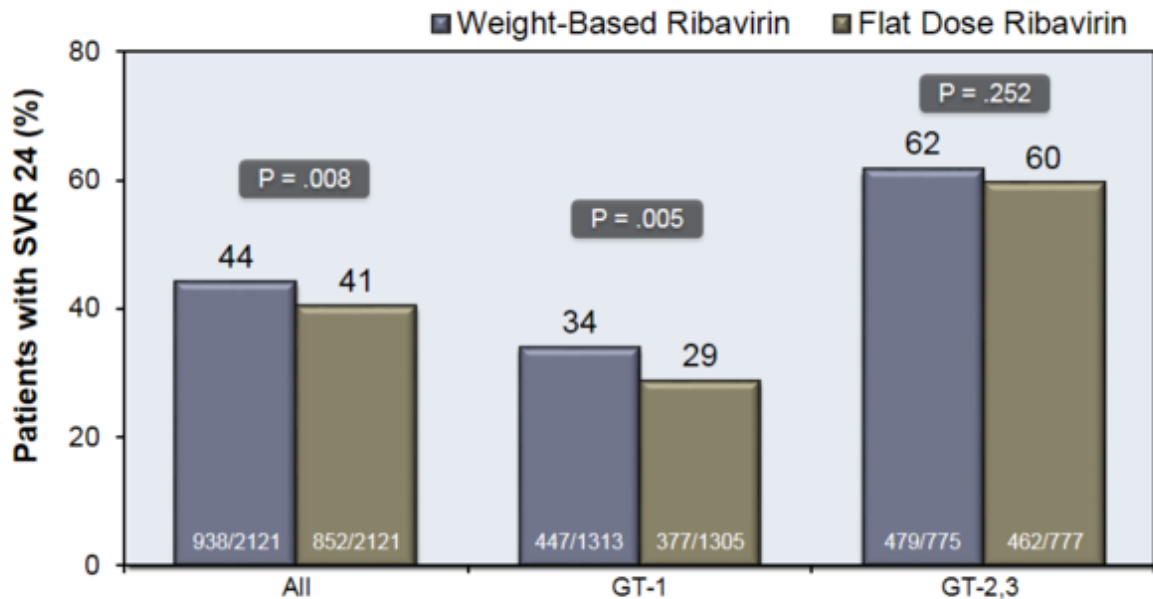
Weight-based Ribavirin (in 2 divided doses):

- 800 mg/d if < 65 kg; 1000 mg/d if 65-85 kg; 1200 mg/d if >85-105 kg; 1400 mg/d if >105 kg

Flat-dose Ribavirin (in 2 divided doses): 800 mg/day

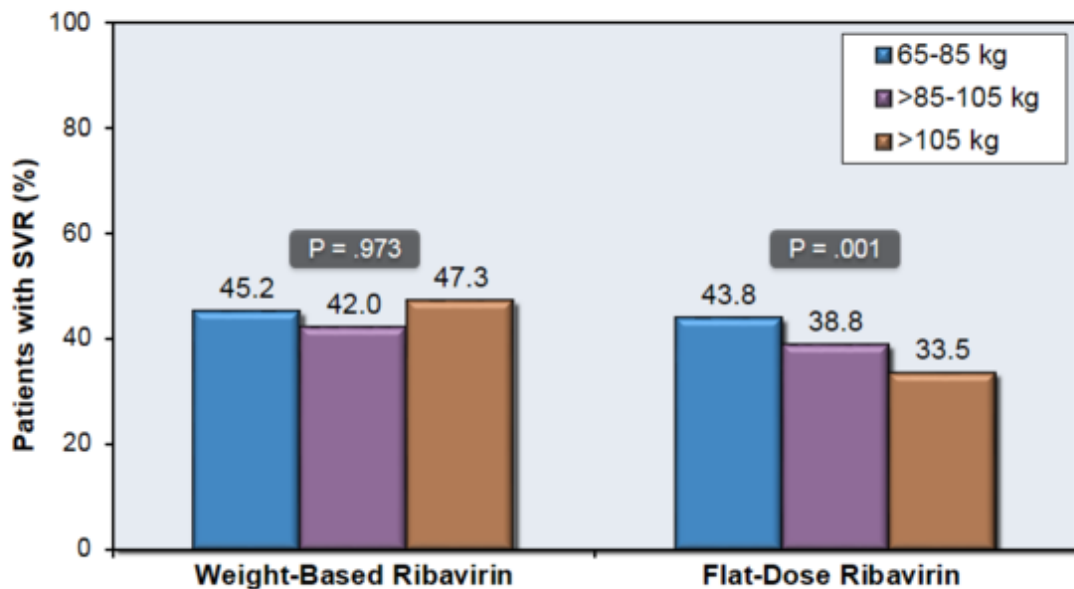
Peginterferon alfa-2b + Ribavirin (weight-based or flat-dose) WIN-R Study: Results

SVR 24, by Genotype and Treatment Regimen



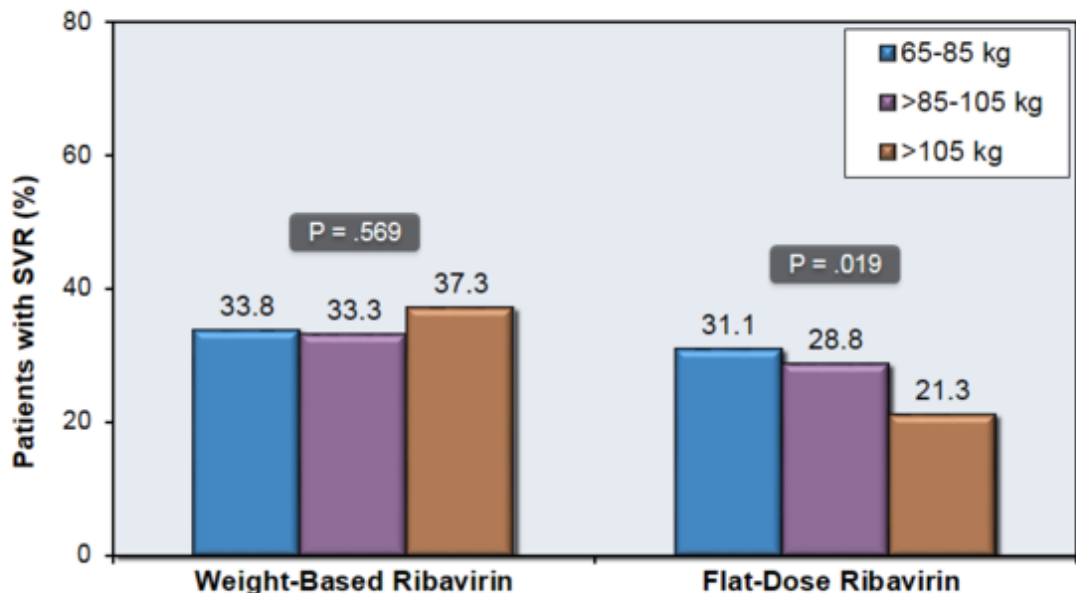
Peginterferon alfa-2b + Ribavirin (weight-based or flat-dose) WIN-R Study: Results

All Treated: SVR24 by Weight Distribution



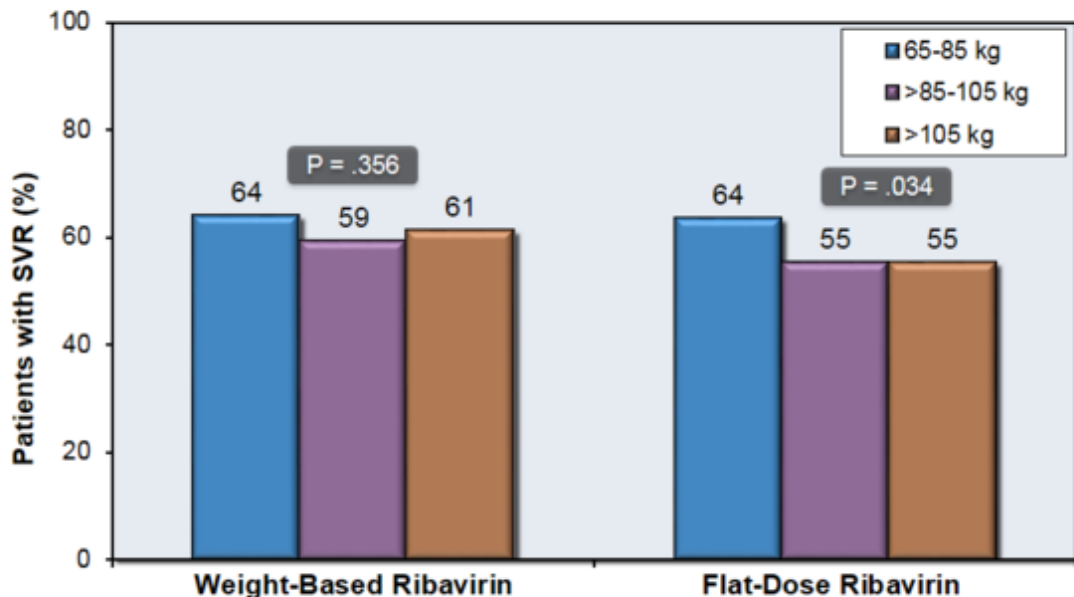
Peginterferon alfa-2b + Ribavirin (weight-based or flat-dose) WIN-R Study: Results

Genotype 1: SVR24 by Weight Distribution



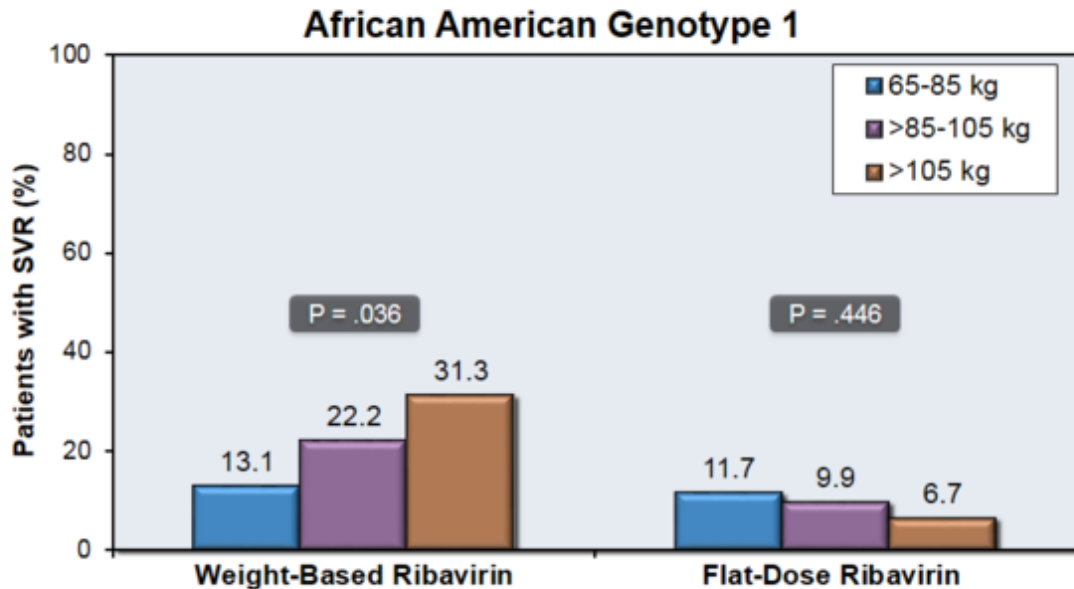
Peginterferon alfa-2b & Weight-based or Flat-dose Ribavirin WIN-R Study: Results

Genotypes 2,3: SVR24 by Weight Distribution



Peginterferon alfa-2b + Ribavirin (weight-based or flat-dose) WIN-R Study: Results

Sustained Virologic Response (SVR) by Weight Distribution



Peginterferon alfa-2b & Weight-based or Flat-dose Ribavirin

WIN-R Study: Results

Relapse Rates among Patients who Achieved End-of-Treatment Responses

